



# ProGlide

High Performance Sliding Door



FLOOR TO CEILING DESIGNS  
FOR MODERN LIVING.

1300 ALSPEC (1300 257 732)  
[alspec.com.au](http://alspec.com.au)

**alspec**  
ALUMINIUM SYSTEMS  
SPECIALISTS

# High Performance Sliding Door

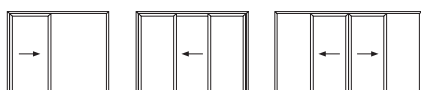
The ProGlide range from Alspec has been designed with Australia's unique architecture and climate in mind. The door allows architects and designers the freedom to achieve large expansive openings without the need to compromise on performance or aesthetics.

Specifying Alspec's ProGlide range ensures the client receives a solid, durable, high performance product.

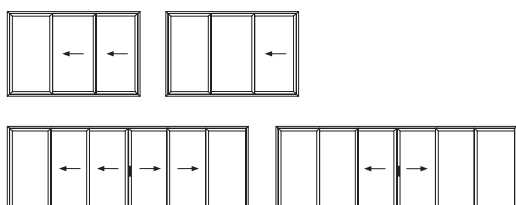
Designed by an Australian company to meet the extremes of the Australian environment, the Alspec ProGlide range is the first choice amongst architects, builders, homeowners and fabricators when performance and quality matter.

## Typical Configurations

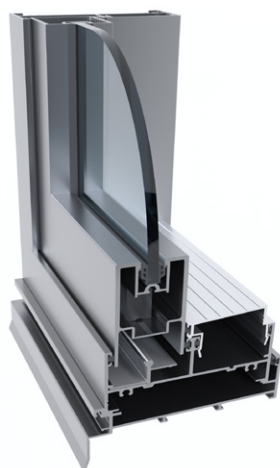
### Double Track



### Triple Track



## CAD Cross Sections



## Key Features

- High water performance sill options
- Large sliding panels, ideal for housing, apartment and commercial applications
- Inside or outside sliding panels, allowing multiple panel designs
- Heavy duty interlocks for high wind load requirements
- Accepts up to 13.52mm single glazed and up to 28mm double glazing units, allowing the designer to achieve the most demanding thermal and acoustic specifications
- 90 degree post free corner option
- Heavy duty rollers up to 200kg per panel
- Bevelled rail options

## Technical Specifications

Frame Dimensions	
Option 1	101 x 50mm
Option 2	151.5 x 50mm
Maximum Product Performance	
SLS (Pa)	3000
ULS (Pa)	6000
Water (Pa)	700
Maximum Recommended Sizes	
Height	3150mm
Sash Width	2250mm
Weight	200kg per panel
Acoustic Performance	
Glass Type	Rw (C; C <sub>tr</sub> )
6.38mm Laminate	32 (0, -2) dB
10.38/12/6.38 IGU	38 (-2, -4) dB
Thermal Performance	
Uw range SG	4.3 - 6.1
SHGC range SG	0.38 - 0.66
Uw range DG	3.0 - 3.9
SHGC range DG	0.22 - 0.55
Glazing Details	
Single Glazed	5 - 13.52mm
Double Glazed	18 - 28mm
Compatible Systems	
McArthur Evo Centre Pocket Framing	
ecoFRAMEplus Centre Pocket Double Glazed Framing	
Hunter Evo Flush Glazed Framing	

